

# WINTER 2021 ART CLASSES

THE CREATIVE WORKSHOP IS ROCHESTER'S ART SCHOOL FOR ALL AGES.



## **SAFETY** POLICIES IN PLACE

Your safety and well-being are our highest priority. Rest assured that we continue to follow all Federal, State & University of Rochester protocols. See our website: [mag.rochester.edu/creativeworkshop/](http://mag.rochester.edu/creativeworkshop/)



# WELCOME TO MAG'S ART SCHOOL

As we are ending the fall session and looking towards winter options, we'd once again like to thank everyone enrolling in our studio classes for your continuing adherence to our safety policies of mask wearing, social distancing and frequent hand washing/sanitizing. It's through this community effort that we help to protect our staff and teachers and your fellow students.

The joy of learning or practicing drawing, painting, pottery, printmaking, jewelry-making, weaving and more is described within the pages of this brochure. The winter session runs from January through March 2021. You'll see old favorites as well as some new classes; in-person learning as well as ZOOM options. We are here and want to inspire your creativity.

Over the course of the last several months, COVID-19 has reshaped the way we live, learn and communicate. For years we've been able to send the brochure directly to your home but for financial reasons, the Workshop needs to step into the 21st century and embrace the age of technology. As such, this will be the last printing of our course catalog. Future class information will be found on our website at [mag.rochester.edu/creativeworkshop/](http://mag.rochester.edu/creativeworkshop/). We know change can be hard, but we are hopeful that the transition will be smooth.

If you have any questions, please don't hesitate to reach out to us at 585.276.8959 or [creativeworkshop@mag.rochester.edu](mailto:creativeworkshop@mag.rochester.edu).

We look forward to seeing you in the studio or online soon.

Rachael Baldanza  
Curriculum Director

Peggy LaHair-Edmunds  
Director



Pictured is Alice's painting *Moonlit*, from our most recent Faculty Show.

## IN MEMORIAM

We mourn the passing of Dr. Alice Chen. For over two decades, Alice brought her joy and talent to the Creative Workshop as a teacher of Asian Brush Painting. Our sincerest condolences to her family, friends and students. Her smile, cheerful personality and beautiful brush stokes will be forever missed.

### COVER ART:

Top center: *Gourd*, pastel by Norah Bayer, student of Faith Gruver. | Bottom left: Warhol-inspired prints by child student of Amy J. Fisher. | Bottom right: Jewelry by Andrea Quercia and Halyna Shkavritsko, students of Joanne Lachiusa.

## HOW TO REGISTER

Registering for classes has never been easier! Create an account today at [mag.rochester.edu/creativeworkshop](http://mag.rochester.edu/creativeworkshop).

## HOW TO CONTACT US

Creative Workshop, 500 University Ave.,  
Rochester, New York 14607

EMAIL [creativeworkshop@mag.rochester.edu](mailto:creativeworkshop@mag.rochester.edu)

PHONE 585.276.8959 FAX 585.276.8960

## ACCESSIBILITY

The Memorial Art Gallery is committed to making its collections, buildings, programs, and services—including classes in the Creative Workshop—accessible to all visitors. We continue to offer classes for the Deaf & hard of hearing community in Rochester. Learn more at [mag.rochester.edu/about/accessibility](http://mag.rochester.edu/about/accessibility).

## FOR THE WHOLE FAMILY

### KIDS CREATE DATES (KCD)

(AGES 4–14—OR YOUNGER KIDS W/ ADULT)

**SATURDAYS STARTING JANUARY 30, 1–3 PM**

HOSTED BY CREATIVE WORKSHOP TEACHERS



We're relaunching this popular series of drop-in artmaking workshops. Enjoy a play date with creativity—before, after or while your family explores the museum! Preregister at [mag.rochester.edu/creativeworkshop](http://mag.rochester.edu/creativeworkshop).

**FEE: \$15 PER CHILD PER SESSION**  
includes all materials

### FAMILY ART CLUB (AGES 5–10 W/ ADULT)

**{96W21} SIX SATURDAYS, 1–2:30 PM,  
JANUARY 30–MARCH 13 (NO CLASS 2/20)**

TAUGHT BY AUBREY DONOVAN

This class is via ZOOM. For details, see p. 7.

### FUN WITH WARHOL FAMILY CLASS (AGES 5–10 W/ ADULT)

**{97W21} FOUR THURSDAYS, 6–7:30 PM,  
JANUARY 14–FEBRUARY 4**

TAUGHT BY AMY J. FISHER

This class is via ZOOM. For details, see p. 7.

# FOR KIDS

## ART & CLAY CLASS JR (AGES 4–6)

**{1W21}** EIGHT SATURDAYS, 9–10:30 AM,  
JANUARY 30–MARCH 27 (NO CLASS 2/20)

TAUGHT BY LISA PELLETTIER-MYERS

**{2W21}** EIGHT SATURDAYS, 11 AM–12:30 PM,  
JANUARY 30–MARCH 27 (NO CLASS 2/20)

TAUGHT BY LISA PELLETTIER-MYERS

**{3W21}** EIGHT SATURDAYS, 1:30–3 PM,  
JANUARY 30–MARCH 27 (NO CLASS 2/20)

TAUGHT BY LISA PELLETTIER-MYERS



Children learn to use art materials as they express and explore clay, painting, drawing and sculpture inspired by famous artists, favorite stories, works at MAG and their own imaginative worlds.

**FEE: \$190 (MEMBERS \$171)**

## ART & CLAY CLASS SR (AGES 7–9)

**{4W21}** EIGHT SATURDAYS, 9–10:30 AM,  
JANUARY 30–MARCH 27 (NO CLASS 2/20)

TAUGHT BY TAYLOR KENNEDY

**{5W21}** EIGHT SATURDAYS, 11 AM–12:30 PM,  
JANUARY 30–MARCH 27 (NO CLASS 2/20)

TAUGHT BY TAYLOR KENNEDY

Mostly drawing & painting with one or two clay projects. This class will be on the go! Looking and drawing, painting and sculpting in the museum, on the MAG grounds and in the studio classroom.

**FEE: \$190 (MEMBERS \$171)**

## CLAY CREATIONS (AGES 7–9)

**{6W21}** EIGHT SATURDAYS, 1:30–3:30 PM,  
JANUARY 30–MARCH 27 (NO CLASS 2/20)

TAUGHT BY KIM KURTZ

This is a fun, productive studio class for kids who like to get their hands dirty. Clay is coiled into big vases, formed into tall creatures, and made into projects based on themes and children's imaginations. Kids learn how to slip and score, what bisque is, and how projects are glazed and fired.

**FEE: \$190 (MEMBERS \$171)**

## DRAWING & PAINTING (AGES 7–12)

**{7W21}** EIGHT SATURDAYS, 9–10:30 AM,  
JANUARY 30–MARCH 27 (NO CLASS 2/20)

TAUGHT BY WHITNEY BROWN

**{8W21}** EIGHT SATURDAYS, 11 AM–12:30 PM,  
JANUARY 30–MARCH 27 (NO CLASS 2/20)

TAUGHT BY TAMIA ALSTON-WARD

Have fun doodling, sketching, drawing, painting and using collage. You'll learn to borrow techniques and styles from artists as you make drawings and paintings that are uniquely yours.

**FEE: \$180 (MEMBERS \$162)**

## INSPIRED BY THE MUSEUM (& MUCH MORE) (AGES 6–9)

**{9W21}** EIGHT SATURDAYS, 9–10:30 AM,  
JANUARY 30–MARCH 27 (NO CLASS 2/20)

TAUGHT BY SIMMI WALLACE

**{10W21}** EIGHT SATURDAYS, 11 AM–12:30 PM,  
JANUARY 30–MARCH 27 (NO CLASS 2/20)

TAUGHT BY WHITNEY BROWN

This fun drawing, painting, and collage class includes frequent visits to the museum for inspiration (and education). You will see and learn from amazing objects from all around the world. As you do, you will build skills to last a lifetime.

**FEE: \$180 (MEMBERS \$162)**

## PAINTING YOUR OWN WAY (AGES 7–9)

**{14W21}** EIGHT SATURDAYS, 9–10:30 AM,  
JANUARY 30–MARCH 27 (NO CLASS 2/20)

TAUGHT BY BEN LEYER

**{15W21}** EIGHT SATURDAYS, 11 AM–12:30 PM,  
JANUARY 30–MARCH 27 (NO CLASS 2/20)

TAUGHT BY SIMMI WALLACE

With solid instruction on how artists make decisions about colors, brushes and composition, children will paint what they want and learn to paint better. Students frequently draw and paint in the museum and outside.

**FEE: \$180 (MEMBERS \$162)**



# WINTER BREAK ART CAMPS

2



## ART DAY CAMP (AGES 6–12)

**BEYOND WARHOL & BACK IN TIME**  
MONDAY–FRIDAY, FEBRUARY 15–19

Register for this all-day camp by the day or for the whole week. We divide kids by age (JUNIORS 6–8 and SENIORS 9–12).

**MONDAY 2/15: DRAWING, PAINTING & CARTOONS {26W21 / 27W21}**

**TUESDAY 2/16: SCULPTURES & PUPPETS {28W21 / 29W21}**

**WEDNESDAY 2/17: POP ART PAINTINGS {30W21 / 31W21}**

**THURSDAY 2/18: EXPRESSING YOURSELF: CARTOONS & GRAFFITI {32W21 / 33W21}**

**FRIDAY 2/19: INSPIRED BY WARHOL & THE ORDINARY {34W21 / 35W21}**

**ALL WEEK: {36W21 / 37W21}**

**FEE FOR THE WEEK: \$290 (MEMBERS \$261)**

**FEE BY THE DAY: \$70 (MEMBERS \$63)**

## CLAY CAMPS

**MONDAY–FRIDAY, FEBRUARY 15–19**

**{38W21}** (AGES 7–9) / **{39W21}** (AGES 10–15)

Ages 7–9 will enjoy creative projects inspired by ancient Egypt. Ages 10–15 will learn timeless clay skills inspired by Asia. *Register for this all-day camp for the week only.*

**FEE FOR THE WEEK: \$300 (MEMBERS \$270)**

Students may be dropped off as early as 8:30 am, picked up as late as 5 pm. Registration opens January 4 at [mag.rochester.edu/classes](http://mag.rochester.edu/classes).

**CARTOONING** (AGES 8–12)**{12W21}** EIGHT SATURDAYS, 9–10:30 AM,  
JANUARY 30–MARCH 27 (NO CLASS 2/20)

TAUGHT BY TAMIA ALSTON-WARD

**{13W21}** EIGHT SATURDAYS, 11 AM–12:30 PM,  
JANUARY 30–MARCH 27 (NO CLASS 2/20)

TAUGHT BY BEN LEYER

Drawing and cartooning are naturally funny and empowering ways for kids to express themselves. This class includes instruction on creating original characters, settings and funny situations. Kids draw in pencil, colored pencil and ink and learn to make increasingly complex comics and cartoons.

**FEE: \$180 (MEMBERS \$162)****MANGA STUDIO**

AGES 9–12:

**{16W21}** EIGHT SATURDAYS, 11 AM–12:30 PM,  
JANUARY 30–MARCH 27 (NO CLASS 2/20)

TAUGHT BY WARREN MIANECKE

AGES 13–15:

**{17W21}** EIGHT SATURDAYS, 1:30–3:30 PM,  
JANUARY 30–MARCH 27 (NO CLASS 2/20)

TAUGHT BY WARREN MIANECKE

This class is designed for kids who enjoy drawing and want to draw better, specifically in Manga, the Japanese style of comic book illustration loved by teens worldwide. Students will learn how to make their own drawings with better visual storytelling and more expressive characters.

**FEE: \$190 (MEMBERS \$171)****CLAY STUDIO: HANDBUILDING AND WHEEL**  
(AGES 10–15)**{18W21}** EIGHT SATURDAYS, 9–10:30 AM,  
JANUARY 30–MARCH 27 (NO CLASS 2/20)

TAUGHT BY ROSE VANTYNE

**{19W21}** EIGHT SATURDAYS, 11 AM–12:30 PM,  
JANUARY 30–MARCH 27 (NO CLASS 2/20)

TAUGHT BY ROSE VANTYNE

Create beautiful and functional ceramic pieces from bisque to glaze as you learn basic handbuilding and wheel throwing techniques.

**FEE: \$190 (MEMBERS \$171)**

# TWEENS & TEENS

**DRAWING & PAINTING NATURE** (AGES 14+)**{69W21}** SIX SATURDAYS, 1:30–3:30 PM,  
FEBRUARY 6–MARCH 20 (NO CLASS 2/20)

TAUGHT BY LYDIA OWENS

Teens are welcome to join this adult class.  
See listing on page 5.**DRAWING INTO THE DIGITAL** (AGES 15+)**{21W21}** EIGHT FRIDAYS, 11 AM–12:30 PM,  
JANUARY 15–MARCH 5

TAUGHT BY ALYNOR WEBSTER

This class is via ZOOM. For details, see p. 8.

# ADULTS BEGIN HERE!

**ART FOR ABSOLUTE BEGINNERS****{40W21}** FOUR THURSDAYS, 6–8 PM,  
JANUARY 28–FEBRUARY 25 (NO CLASS 2/18)

TAUGHT BY SARA BLAKE

**{41W21}** SIX TUESDAYS, 2–4 PM,  
FEBRUARY 2–MARCH 16 (NO CLASS 2/16)

TAUGHT BY SARA BLAKE

Learn basic art principles as you play and gain confidence in your creativity. This class is designed as a sampler of media, with all materials provided.

**FEE FOR FOUR SESSIONS: \$150 (MEMBERS \$135)****FEE FOR SIX SESSIONS: \$200 (MEMBERS \$180)****PLAYFUL PAINTING****{42W21}** FOUR THURSDAYS, 6–8 PM, MARCH 4–25  
TAUGHT BY SARA BLAKE**{43W21}** EIGHT TUESDAYS, 6–8 PM,  
JANUARY 26–MARCH 23 (NO CLASS 2/16)

TAUGHT BY SARA BLAKE

Learn to enjoy painting in this relaxed and fun class. We'll paint with watercolor, acrylic and pastels. All materials are provided.

**FEE FOR FOUR SESSIONS: \$150 (MEMBERS \$135)****FEE FOR EIGHT SESSIONS: \$240 (MEMBERS \$216)****AWESOME PRINTMAKING: PLATES,  
TECHNIQUES & LOTS OF INSPIRATION**

(AGES 13–18)

**{22W21}** EIGHT SATURDAYS, 1:30–3:30 PM,  
JANUARY 30–MARCH 27 (NO CLASS 2/20)

TAUGHT BY TAYLOR KENNEDY

We'll make styrofoam plate etchings, collographs and other prints. For inspiration, we'll visit the *Season of Warhol* exhibition.

**FEE: \$200 (MEMBERS \$180)****WHAT IS ART THERAPY &****HOW CAN YOU GET STARTED?** (AGES 14+)**{23W21}** THREE FRIDAYS, 6:30–7:30 PM,  
FEBRUARY 5, 12 & 26

TAUGHT BY AUBREY DONOVAN

This class is via ZOOM. For details, see p. 8.

**ART FOR MAXIMUM JOY:  
FROM A (ACRYLIC) TO Z (ZENTANGLE)****{44W21}** FOUR FRIDAYS, 1:30–4:30 PM,  
FEBRUARY 5–MARCH 5 (NO CLASS 2/19)

TAUGHT BY KAREN BARBER

This class is designed to give students a glimpse of 26 different ways of doing art. You'll try your hand at and learn about different approaches to art, all using very basic materials. The goal is to play with art materials, experiment to see what works and what doesn't, and have fun. Some materials are provided; others will be brought from home.

**FEE: \$150 (MEMBERS \$135)****ART FOR MAXIMUM JOY:  
FROM A (ACRYLIC) TO Z (ZENTANGLE)****{45W21}** FOUR TUESDAYS, 9:30 AM–12:30 PM,  
JANUARY 19–FEBRUARY 9

TAUGHT BY CYNTHIA IANNACCONE

This class is via ZOOM. For details, see p. 8.

# DRAWING & PAINTING

## BEGINNING DRAWING

{46W21} EIGHT FRIDAYS, 9:30–11:30 AM,



JANUARY 29–MARCH 26  
(NO CLASS 2/19)

TAUGHT BY AARON SWINDLE

{47W21} SIX WEDNESDAYS, 6:30–9:30 PM,  
FEBRUARY 3–MARCH 17 (NO CLASS 2/17)

TAUGHT BY JOE TARANTELLI

{48W21} EIGHT THURSDAYS, 1:30–4:30 PM,  
JANUARY 28–MARCH 25 (NO CLASS 2/18)

TAUGHT BY DAVID GARDNER

Learn to draw what you see—in the museum and in the studio—with accuracy of scale, form, proportion, and perspective. In this class you'll enjoy fun exercises, patient instruction, and individual coaching—it works! Friday's class is taught in ASL and spoken English; for more information, visit [mag.rochester.edu/about/accessibility](http://mag.rochester.edu/about/accessibility).

FEE FOR EIGHT SESSIONS: \$250 (MEMBERS \$225)

FEE FOR SIX SESSIONS: \$190 (MEMBERS \$171)

## SHORT BEGINNING DRAWING

{49W21} FIVE SATURDAYS, 1:30–4:30 PM,  
FEBRUARY 6–MARCH 13 (NO CLASS 2/20)

TAUGHT BY JOE TARANTELLI

This class begins your process of learning to draw with attention to observation, scale, form and the basics of perspective. Better to get started than always wish you had!

FEE: \$170 (MEMBERS \$153)

## SHORT BEGINNING DRAWING

{50W21} SIX TUESDAYS, 1:30–4:30 PM,  
JANUARY 19–FEBRUARY 23

TAUGHT BY JOE TARANTELLI

This class is taught via ZOOM. For details, see p. 8.

## SETTING UP YOUR OWN HOME STUDIO: DRAWING IN THE BEST LIGHT

{51W21} THREE TUESDAYS, 10:30 AM–12:30 PM,  
JANUARY 19–FEBRUARY 2

TAUGHT BY SARAH HART

This class is via ZOOM. For details, see p. 8.

## DRAWING IN THE GALLERIES

{52W21} SIX THURSDAYS, 6–9 PM,  
FEBRUARY 4–MARCH 18 (NO CLASS 2/18)

TAUGHT BY DALE KLEIN

Really see the artwork in the Memorial Art Gallery by slowing down to look, draw, imagine and create stronger sketchbook drawings than you thought possible. Dale provides patient, guided help as you draw. For all levels, this class includes at least one visit to the Andy Warhol exhibit.

FEE: \$190 (MEMBERS \$171)

## FIGURE DRAWING

{53W21} EIGHT TUESDAYS, 6:30–9:30 PM,  
JANUARY 26–MARCH 23 (NO CLASS 2/16)

TAUGHT BY DEJAN PEJOVIC

Learn life drawing the traditional way—from a live model (generally nude, sometimes clothed). This class includes instruction in gesture, sighting, contour, perspective, value and more.

FEE: \$270 (MEMBERS \$243)

## ILLUSTRATION & CARTOONING BASICS

{54W21} EIGHT THURSDAYS, 6:30–9:30 PM,  
JANUARY 14–MARCH 4

TAUGHT BY GRANT LOUNSBURY

This class is taught via ZOOM. For details, see p. 8.

## INITIAL ADVENTURES IN LETTERING

{55W21} TWO WEDNESDAYS, 1:30–4:30 PM,  
FEBRUARY 3 & 10

TAUGHT BY KAREN BARBER

Explore the art of calligraphy using the letters of your name, pens, pencils, paints, paper, collage and more.

FEE: \$90 (MEMBERS \$81)

## DRAWING & PAINTING VERSAL LETTERS

{56W21} THREE THURSDAYS, 10:30 AM–12:30 PM,  
JANUARY 21–FEBRUARY 4

TAUGHT BY CYNTHIA IANNACCONE

This class is via ZOOM. For details, see p. 8.

## OBSERVATIONAL DRAWING: MODELS & MORE

{57W21} EIGHT THURSDAYS, 1:30–4:30 PM,  
JANUARY 28–MARCH 25 (NO CLASS 2/18)

TAUGHT BY DEJAN PEJOVIC

This class introduces the foundations of all drawing—looking at people, objects and spaces, then recreating that vision on paper. Students will work from a nude model and experience drawing in both museum and studio.

FEE: \$270 (MEMBERS \$243)

**MATERIALS** lists post one week before classes start at [mag.rochester.edu/creativeworkshop](http://mag.rochester.edu/creativeworkshop)

## DRAWING INTO PAINTING

{59W21} SEVEN FRIDAYS, 9:30 AM–12:30 PM,  
JANUARY 15–FEBRUARY 26

TAUGHT BY GRANT LOUNSBURY

{60W21} EIGHT WEDNESDAYS, 1:30–4:30 PM,  
JANUARY 13–MARCH 3

TAUGHT BY FAITH GRUVER

This class is taught via ZOOM. For details, see p. 8.

## BEGINNING ACRYLIC PAINTING

{61W21} FOUR THURSDAYS, 6:30–8:30 PM,  
FEBRUARY 11–MARCH 4

TAUGHT BY AMY J. FISHER

This class is taught via ZOOM. For details, see p. 8.



PICTURED: Norah Bayer, a student in Faith Gruver's online class this fall, shows off her finished Koi study.

## BEGINNING ACRYLIC PAINTING

{62W21} EIGHT TUESDAYS, 6:30–9:30 PM,  
JANUARY 26–MARCH 23 (NO CLASS 2/16)

TAUGHT BY JOE TARANTELLI

{63W21} EIGHT WEDNESDAYS, 1:30–4:30 PM,  
JANUARY 27–MARCH 24 (NO CLASS 2/17)

TAUGHT BY DAVID GARDNER

{64W21} EIGHT THURSDAYS, 9:30 AM–12:30 PM,  
JANUARY 28–MARCH 25 (NO CLASS 2/18)

TAUGHT BY JOE TARANTELLI

Start painting with clear instruction in using color, finding a process that works for you, and creating strong compositions. Our classes include demos, exercises, and lots of inspiration.

FEE: \$260 (MEMBERS \$234)

More painting classes on the next page

# more PAINTING

## PAINTING IN ACRYLIC OR OIL

**{65W21}** EIGHT TUESDAYS, 1:30–4:30 PM,  
JANUARY 12–MARCH 9

TAUGHT BY GRANT LOUNSBURY

This class is taught via ZOOM. For details, see p. 8.

## PAINTING IN ACRYLIC OR OIL

**{66W21}** EIGHT TUESDAYS, 1:30–4:30 PM,  
JANUARY 26–MARCH 23 (NO CLASS 2/16)

TAUGHT BY DALE KLEIN

**{67W21}** EIGHT MONDAYS, 1:30–4:30 PM,  
JANUARY 25–MARCH 22 (NO CLASS 2/15)

TAUGHT BY JOE TARANTELLI



Not sure where you stand with your paintings? This class is a comfortable painting studio, where a patient and helpful instructor will push your work along as you learn from practice and your peers.

**FEE: \$260  
(MEMBERS \$234)**

PICTURED: *Lilac Study* by Shula Meyerowitz, winter 2020 student of Faith Gruver.

## BEGINNING WITH EGG TEMPERA PAINTS

**{68W21}** THREE FRIDAYS, 10:30 AM–12:30 PM,  
JANUARY 15–29

TAUGHT BY CYNTHIA IANNACONE

This class is via ZOOM. For details, see p. 8.

## DRAWING & PAINTING NATURE

**{69W21}** SIX SATURDAYS, 1:30–3:30 PM,  
FEBRUARY 6–MARCH 20 (NO CLASS 2/20)

TAUGHT BY LYDIA OWENS

Draw and paint quick sketches of the plants in the all-season gardens around the museum. We will also be inspired by drawings and paintings on view. Learn to see more, create your own authentic art, and grow as a creative person. Students will use watercolor. Open to adults and teens (ages 14 and above).

**FEE: \$190 (MEMBERS \$171)**

## BEGINNING WATERCOLOR: PAINTING & SKETCHING

**{70W21}** EIGHT TUESDAYS, 9:30 AM–12:30 PM,  
JANUARY 12–MARCH 2

TAUGHT BY FAITH GRUVER

This class is taught via ZOOM. For details, see p. 8.

## BEGINNING WATERCOLOR PAINTING

**{71W21}** EIGHT TUESDAYS, 1:30–4:30 PM,  
JANUARY 26–MARCH 23 (NO CLASS 2/16)

TAUGHT BY DAVID GARDNER

This class introduces watercolor painting through playful exercises and experiments in applying color and water. There are no mistakes in this class, rather chances to learn what brushes, paints, and paper work best to make the paintings you want to make.

**FEE: \$260 (MEMBERS \$234)**

## BASIC WATERCOLOR PAINTING

**{72W21}** EIGHT TUESDAYS, 6:30–9:30 PM,  
JANUARY 26–MARCH 23 (NO CLASS 2/16)

TAUGHT BY LARRY KEEFE

Start from scratch in a supportive environment as you explore the materials and basic techniques used in watercolor and learn to control colors, values and shapes. This class is a great place for absolute beginners—or those who've done a little painting—to get their questions answered.

**FEE: \$260 (MEMBERS \$234)**

## BASIC WATERCOLOR: STAGE II

**{73W21}** EIGHT THURSDAYS, 1:30–4:30 PM,  
JANUARY 28–MARCH 25 (NO CLASS 2/18)

TAUGHT BY LARRY KEEFE

This class builds upon the materials and techniques of Basic Watercolor through carefully chosen painting projects. Different projects are taught each semester with step-by-step, personal guidance, so this class can be taken multiple times as your skill improves.

**FEE: \$260 (MEMBERS \$234)**

## CONTINUING IN WATERCOLOR

**{74W21}** EIGHT THURSDAYS, 9:30 AM–12:30 PM,  
JANUARY 28–MARCH 25 (NO CLASS 2/18)

TAUGHT BY LARRY KEEFE

This studio class is an ideal place for the intermediate watercolor artist to work with the guidance of a skilled teacher in a collaborative setting. Each class opens with a demo on a subject of interest such as perspective, brushwork and use of color, and then allows time for individual work.

**FEE: \$250 (MEMBERS \$225)**

## ADVANCED WATERCOLOR

**{75W21}** EIGHT WEDNESDAYS, 9:30 AM–12:30 PM,  
JANUARY 27–MARCH 24 (NO CLASS 2/17)

TAUGHT BY G.A. SHELLER

This class focuses on more sophisticated image selection, color knowledge and composition analysis. For students with some experience. *Class size is limited.*

**FEE: \$250 (MEMBERS \$225)**

## COMPOSITION IS EVERYTHING

**{76W21}** FOUR WEDNESDAYS, 1:30–4:30 PM,  
JANUARY 27–FEBRUARY 24 (NO CLASS 2/17)

TAUGHT BY DALE KLEIN

We tend to repeat a composition—the term for how an artwork is designed—in multiple paintings. This class will help you use different techniques and strategies to better express yourself and communicate meaning. Using the museum as your muse, explore composition through drawings and simple ink paintings.

**FEE: \$150 (MEMBERS \$135)**

# MIX YOUR MEDIA

## PRINTMAKING SAMPLER

**{77W21}** FOUR WEDNESDAYS, 1:30–4:30 PM,  
MARCH 3–24 (NO CLASS 2/17)

TAUGHT BY DALE KLEIN

This class is a great introduction to a traditional craft of making multiple copies of a handmade original. You'll make collographs, monoprints, simple Styrofoam "etchings," and basic wood- or linoleum-carved plates. The Workshop has an etching press that will be used.

**FEE: \$150 (MEMBERS \$135)**

## MIXED MEDIA & COLLAGE

**{78W21}** SIX FRIDAYS, 1:30–4:30 PM,  
FEBRUARY 5–MARCH 19  
(NO CLASS 2/19)



TAUGHT BY AARON SWINDLE

Have fun as you learn to use a wide variety of materials to express and communicate in new ways. The class will create 2-D and 3-D projects. At least one class will involve drawing in the museum and pulling inspiration from the MAG collection. This class is taught in ASL and spoken English; for more information, visit [mag.rochester.edu/about/accessibility](http://mag.rochester.edu/about/accessibility).

**FEE: \$200 (MEMBERS \$180)**



### POTTERY MAKING (FOR ANYONE)

**{79W21}** EIGHT TUESDAYS, 9:30 AM–12:30 PM,  
JANUARY 26–MARCH 23 (NO CLASS 2/16)

TAUGHT BY JASON FERGUSON

**{80W21}** EIGHT FRIDAYS, 9:30 AM–12:30 PM,  
JANUARY 29–MARCH 26 (NO CLASS 2/19)

TAUGHT BY ROSE VANTYNE

Are you interested in exploring with clay? This interactive class should appeal to anyone seeking experience in handbuilding, throwing on the wheel, and glazing of your finished work. The instructor offers group demonstrations, as well as individualized instruction. Great for beginners or as a refresher for students with past experience.

**FEE: \$270 (MEMBERS \$243)**

### BEGINNING ON THE POTTER'S WHEEL

**{81W21}** EIGHT SATURDAYS, 1:30–4:30 PM,  
JANUARY 30–MARCH 27 (NO CLASS 2/20)

TAUGHT BY ROSE VANTYNE

**{82W21}** EIGHT TUESDAYS, 1:30–4:30 PM,  
JANUARY 26–MARCH 23 (NO CLASS 2/16)

TAUGHT BY ROSE VANTYNE

**{83W21}** EIGHT THURSDAYS, 6:30–9:30 PM,  
JANUARY 28–MARCH 25 (NO CLASS 2/18)

TAUGHT BY JASON FERGUSON & ROSE VANTYNE

This course introduces new students to the basics of the potter's wheel—how to wedge clay, center, throw cylinders, trim and glaze. Continuing students will build skills by learning how to make bowls and plates. Your teacher will demonstrate and give you hands-on help when needed. Students benefit from repeating this course.

**FEE: \$270 (MEMBERS \$243)**

# CLAY YOUR WAY

### INTERMEDIATE WHEEL THROWING (FOR RETURNING STUDENTS)

**{84W21}** EIGHT WEDNESDAYS, 6:30–9:30 PM,  
JANUARY 27–MARCH 24 (NO CLASS 2/17)

TAUGHT BY SHELLY GREEN STOLER

**{85W21}** EIGHT TUESDAYS, 6:30–9:30 PM,  
JANUARY 26–MARCH 23 (NO CLASS 2/16)

TAUGHT BY SHELLY GREEN STOLER

You're ready for this class when you can throw a cylinder, bowl, and plate. Learn how to attach handles and throw larger vessels, lids, platters and altered forms. Discover your favorite clay bodies and glaze combinations. Your instructor will provide demonstrations and individualized instruction.

**FEE: \$270 (MEMBERS \$243)**

### ADVANCED WHEEL THROWING (FOR RETURNING STUDENTS)

**{86W21}** EIGHT WEDNESDAYS, 9:30 AM–12:30 PM,  
JANUARY 27–MARCH 24 (NO CLASS 2/17)

TAUGHT BY SHELLY GREEN STOLER

This class is designed for students with proficient throwing skills. We'll focus on individual projects and developing a personal style. Concentration will be on design techniques, complex forms, surface texture, slip and glaze applications. Your instructor will provide individualized instruction and critique.

**FEE: \$270 (MEMBERS \$243)**

### CONTINUING IN CLAY (FOR RETURNING STUDENTS)

**{87W21}** EIGHT MONDAYS, 9:30 AM–12:30 PM,  
JANUARY 25–MARCH 22 (NO CLASS 2/15)

TAUGHT BY PAUL HARP

**{88W21}** EIGHT THURSDAYS, 9:30 AM–12:30 PM,  
JANUARY 28–MARCH 25 (NO CLASS 2/18)

TAUGHT BY PAUL HARP

This class is for students already familiar with our clay bodies, glazes and firing processes. With your instructor, you'll set personal goals, pursue your own designs and interests, and explore new ways of throwing, hand building and glazing. Speak with our instructor to see if this class is right for you.

**FEE: \$270 (MEMBERS \$243)**

Clay class fees include firing & glazes. Adult students can buy clay and tools at the Workshop.

### RELIEF: 2D & 3D OBSERVATION

**{58W21}** SIX TUESDAYS, 1:30–4:30 PM,  
FEBRUARY 2–MARCH 16 (NO CLASS 2/16)

TAUGHT BY DEJAN PEJOVIC

Call it 2.5D! Relief combines the illusion of drawing and the form of sculpture. This class includes studies of still life, figure and landscape in low and high relief. Along with drawing exercises, you will create a terracotta tile. Clay is provided.

**FEE: \$220 (MEMBERS \$198)**

### FIGURE & CERAMIC SCULPTURE

**{89W21}** EIGHT THURSDAYS, 6:30–9:30 PM,  
JANUARY 28–MARCH 25 (NO CLASS 2/18)

TAUGHT BY DEJAN PEJOVIC

Gain a solid understanding of a broad range of sculptural form and technique using clay. This class includes practical instruction and mentoring in figure and portrait studies as well as in independent projects.

**FEE: \$280 (MEMBERS \$252)**

# ADD FIBER

### WEAVING

**{90W21}** EIGHT WEDNESDAYS, 6:30–9:30 PM,  
JANUARY 27–MARCH 24 (NO CLASS 2/17)

TAUGHT BY MIMI SMITH



This exciting fiber art combines color, texture, wonderful yarns and fascinating patterns all in one piece. Create scarves, place mats,

runners and towels to tapestry and wall hangings.

**FEE: \$220 (MEMBERS \$198)**



## MAKE YOUR OWN JEWELRY

### BEGINNING JEWELRY

**{91W21} EIGHT TUESDAYS, 1:30–4:30 PM,  
JANUARY 26–MARCH 23 (NO CLASS 2/16)**

TAUGHT BY JOANNE LACHIUSA

Here's your chance to learn basic cutting, filing, forming, soldering and finishing metal. You'll use tiny, fine-toothed sawblades to cut metal and learn to solder copper, brass or silver. You'll also learn to bezel-set stones, as you



design and create your own fine jewelry. Each teacher approaches the class with a unique style, with an eye towards demonstrating and instilling fine craftsmanship and safe techniques from your very first project. Fee includes standard supply kit (no silver).

**FEE: \$250 (MEMBERS \$225)**

PICTURED ABOVE: Silver horse pins by Derek Toole, student of Joanne LaChiusa.

### CONTINUING IN JEWELRY

**{92W21} EIGHT  
WEDNESDAYS, 6:30–9:30 PM,  
JANUARY 27–MARCH 24  
(NO CLASS 2/17)**

TAUGHT BY JOANNE LACHIUSA

Take on more ambitious projects and learn more advanced techniques than those offered in Beginning Jewelry. This class is designed for students who have basic jewelry making skills including sawing, filing, silver soldering, and forming.

**FEE: \$250 (MEMBERS \$225)**



# ZOOM ONLINE LEARNING

Continue learning from your own home! Our popular online courses are offered through the ZOOM portal, secured by the University of Rochester and very easy to get the hang of.

Sign up as usual at [mag.rochester.edu/classes](https://mag.rochester.edu/classes) or by mailing in the registration form on page 10, along with a check. A link will be sent a week before the class meets.

Don't see the class you want? We can create a custom Zoom class on demand for you and a small group of friends (and/or family). To learn more, contact Rachael Baldanza, 585.276.8956 ([rbaldanza@mag.rochester.edu](mailto:rbaldanza@mag.rochester.edu)).

## for families

**FAMILY ART CLUB** (AGES 5–10 W/ ADULT)

**{96W21} SIX SATURDAYS, 1–2:30 PM, JANUARY 30–MARCH 13 (NO CLASS 2/20)**

TAUGHT BY AUBREY DONOVAN

This fun and relaxed art camp lets kids follow their creative ideas using materials you have at home. The emphasis is on personal expression, creative play, and a "how can we make it work" approach, and the goal is joyful art made in your own home.

**FEE: \$120 (MEMBERS \$108)**



**FUN WITH WARHOL FAMILY CLASS**

**{97W21} FOUR THURSDAYS, 6–7:30 PM,  
JANUARY 14–FEBRUARY 4**

TAUGHT BY AMY J. FISHER

Enjoy fun, guided projects for kids and grownups to explore the artist and his many inventive works. This class is a little bit art history and a lot bit making art together.

**FEE: \$80 (MEMBERS \$72)** includes a ticket for a free family visit to the Warhol exhibition

PICTURED: Rochester artist @Dellarious worked with MAG on a series of wheatpastes advertising the Warhol exhibition. Photo by Alyssa Bileschi.

### MAKING ART AT HOME: LITTLE LESSONS

As part of our efforts to keep kids and families making art and having fun, five of our teaching artists have developed videos inspired by the Memorial Art Gallery's permanent collection. The videos are available at

[mag.rochester.edu/creativeworkshop/little-lessons/](https://mag.rochester.edu/creativeworkshop/little-lessons/)

We hope you have fun exploring these creative projects you can do at home!

*Generous support for this project is provided by Art Bridges.*



## for teens

### **DRAWING INTO THE DIGITAL (AGES 15+)**

**{21W21} EIGHT FRIDAYS, 11 AM–12:30 PM,  
JANUARY 15–MARCH 5**

TAUGHT BY ALYNOR WEBSTER

Use drawing apps on your own tablet or laptop to experiment & explore drawing digitally. Your teacher is an artist with expertise in both traditional and computer-aided drawing.

**FEE: \$160 (MEMBERS \$144)**

### **WHAT IS ART THERAPY & HOW CAN YOU GET STARTED? (AGES 14+)**

**{23W21} THREE FRIDAYS, 6:30–7:30 PM,  
FEBRUARY 5, 12 & 26**

TAUGHT BY AUBREY DONOVAN

This class is for teenagers who want to understand how art therapy works, as well as how one goes to college and becomes certified to work in this field and help others. This short class opens up a new world.

**FEE: \$40 (MEMBERS \$36)**

## adult drawing & painting

### **ART FOR MAXIMUM JOY: FROM A (ACRYLIC) TO Z (ZENTANGLE)**

**{45W21} FOUR TUESDAYS, 9:30 AM–12:30 PM,  
JANUARY 19–FEBRUARY 9**

TAUGHT BY CYNTHIA IANNACCONE

Learn strategies and techniques for making artworks on paper. Using zentangle, simple water-based paints, and collage you will create meaningful and original artwork.

**FEE: \$130 (MEMBERS \$117)**

### **SHORT BEGINNING DRAWING**

**{50W21} SIX TUESDAYS, 1:30–4:30 PM,  
JANUARY 19–FEBRUARY 23**

TAUGHT BY JOE TARANTELLI

Begin the process of learning to draw with attention to observation, scale, form and the basics of perspective. Better to get started than always to wish you had!

**FEE: \$180 (MEMBERS \$162)**

### **SETTING UP YOUR OWN HOME STUDIO: DRAWING IN THE BEST LIGHT**

**{51W21} THREE TUESDAYS, 10:30 AM–12:30 PM,  
JANUARY 19–FEBRUARY 2**

TAUGHT BY SARAH HART

This short class will help you adapt your home, apartment or studio to maximize factors that will help you make the best art you can. Learn tips from artist from the past, use natural light, and draw your own design. You'll also be encouraged to make artwork in your own setting.

**FEE: \$100 (MEMBERS \$90)**

### **ILLUSTRATION & CARTOONING BASICS**

**{54W21} EIGHT THURSDAYS, 6:30–9:30 PM,  
JANUARY 14–MARCH 4**

TAUGHT BY GRANT LOUNSBURY

Your instructor—a traditional animation and illustration artist—will help you develop unique character design, learn storyboarding fundamentals, and ultimately put the pieces together to create your own comic strip or illustrated story.

**FEE: \$230 (MEMBERS \$207)**

### **DRAWING & PAINTING VERSAL LETTERS**

**{56W21} THREE THURSDAYS, 10:30 AM–12:30 PM,  
JANUARY 21–FEBRUARY 4**

TAUGHT BY CYNTHIA IANNACCONE

A Versal letter is the first large, illuminated letterform—usually a capital letter—that begins a manuscript, a chapter, or a verse. Celtic, Romanesque, Lombardic, and Runic are among the traditional styles of Versals. In this class, you'll learn a modern approach on Versals and how to illuminate them by using watercolor, pen and ink, and colored pencils. Letters will be hand drawn.

**FEE: \$100 (MEMBERS \$90)**

### **DRAWING INTO PAINTING**

**{59W21} SEVEN FRIDAYS, 9:30 AM–12:30 PM,  
JANUARY 15–FEBRUARY 26**

TAUGHT BY GRANT LOUNSBURY

**{60W21} EIGHT WEDNESDAYS, 1:30–4:30 PM,  
JANUARY 13–MARCH 3**

TAUGHT BY FAITH GRUVER

You'll paint better if you draw better—and have fun doing both! This class is a creative mix of essential drawing skills and basics of acrylic painting—scale and proportion, form and value, setting up your palette, and designing your composition.

**FEE: \$230 (MEMBERS \$207)**



### **BEGINNING ACRYLIC PAINTING**

**{61W21} FOUR THURSDAYS, 6:30–8:30 PM,  
FEBRUARY 11–MARCH 4**

TAUGHT BY AMY J. FISHER

This popular class provides solid, sequential instruction in acrylic painting, with special emphasis on composition, color mixing, paint application, and making good painting decisions.

**FEE: \$130 (MEMBERS \$117)**

### **PAINTING IN ACRYLIC OR OIL**

**{65W21} EIGHT TUESDAYS, 1:30–4:30 PM,  
JANUARY 12–MARCH 9**

TAUGHT BY GRANT LOUNSBURY

Not sure where you stand with your paintings? This class is a comfortable painting studio, where a patient and helpful instructor will push your work along as you learn from practice and your peers.

**FEE: \$230 (MEMBERS \$207)**

### **BEGINNING WITH EGG TEMPERA PAINTS**

**{68W21} THREE FRIDAYS, 10:30 AM–12:30 PM,  
JANUARY 15–29**

TAUGHT BY CYNTHIA IANNACCONE

Learn to make and use egg tempera, a modern and easy to use paint made from eggs and gouache paints. As paints are made, you will also have a chance to make small paintings with your teacher's positive feedback.

**FEE: \$100 (MEMBERS \$90)**

### **BEGINNING WATERCOLOR: PAINTING & SKETCHING**

**{70W21} EIGHT TUESDAYS, 9:30 AM–12:30 PM,  
JANUARY 12–MARCH 2**

TAUGHT BY FAITH GRUVER

This playful approach to watercolor painting will allow you to grow skills at rapidly painting what you see. Great for loosening up and learning how to see through sketching. You'll turn sketches into a few fabulous paintings.

**FEE: \$230 (MEMBERS \$207)**

# ART HISTORY

The classes below are part of a 10-month survey of Western art. All units are taught via ZOOM and include the option to visit the museum with Lucy in scheduled, small-group visits.

## ELEGANCE & PASSION: THE 18TH CENTURY, NEO-CLASSICISM & ROMANTICISM

**{93W21} FOUR WEDNESDAYS, 11 AM–12:30 PM, JANUARY 6–27**

TAUGHT BY LUCY WINTERS DURKIN

Widely differing approaches to the concept of beauty in art reflected an era dominated by political turmoil and inter-continental



wars. The structured and reasoned Neo-Classical style was countered by the Romantic impulse, which celebrated the individual. We'll also explore the emerging US art scene and consider if there truly is an "American" style.

**FEE: \$130 (MEMBERS \$117)**

PICTURED ABOVE: Sir Joshua Reynolds, *Miss Sophia Hoare* (1783). MAG, George Eastman Collection of the University of Rochester.

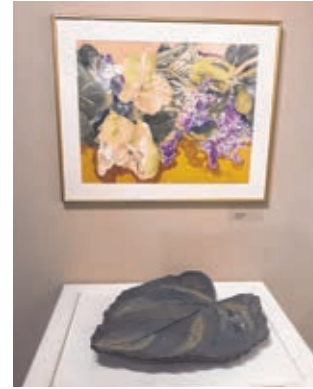
## RENAISSANCE & MANNERISM: REALISM THROUGH POST-IMPRESSIONISM

**{94W21} FIVE WEDNESDAYS, 11 AM–12:30 PM, FEBRUARY 3–MARCH 10 (NO CLASS 2/17)**

TAUGHT BY LUCY WINTERS DURKIN

Art and literature in the mid to late 19th century turned to issues of modern life as an important subject. The development of photography, the emerging study of optical perception, and the availability to artists of new materials also spurred important explorations of light and color. We'll examine these shifts, and how artists responded and translated what their eyes saw in new and challenging ways.

**FEE: \$160 (MEMBERS \$144)**



## BURNE GALLERY EXHIBITIONS

Each Creative Workshop student—adult, teen or child; newcomer or “regular”—has a chance to show at least one piece of artwork at MAG in the Workshop's Lucy Burne Gallery or in our new online art exhibits. This winter we also welcome the Print Club of Rochester.

### CELEBRATING 90 YEARS: PRINT CLUB OF ROCHESTER, 1930–2020

ON VIEW **NOVEMBER 30–JANUARY 30** IN THE LUCY BURNE GALLERY;

ONLINE AT [MAG.ROCHESTER.EDU/CREATIVE WORKSHOP](https://mag.rochester.edu/creative-workshop) UNTIL JANUARY 2021



Established in 1930 at the suggestion of the Memorial Art Gallery, the Print Club of Rochester is today one of the country's longest continuously running print clubs. Members across the country range from printmakers to collectors to enthusiasts, all sharing the appreciation for the medium.

This exhibition showcases a selection of works from the club's impressive archive of Presentation Prints, commissioned each year since 1934. The list of commissioned artists reads like a who's who of printmaking—including such notables as Clare Romano, Dan Welden, Karen Kunc, Carol Wax, James D. Havens, Robert Marx and Harvey Braverman.

### WARMTH: A WINTER ADULT & TEEN STUDENT SHOW

ON VIEW **FEBRUARY 5–MARCH 6** IN THE LUCY BURNE GALLERY;

ONLINE AT [MAG.ROCHESTER.EDU/CREATIVE WORKSHOP](https://mag.rochester.edu/creative-workshop) UNTIL MAY 2021

### JOY: WINTER CHILDREN'S SHOW

ON VIEW **MARCH 12–27** IN THE LUCY BURNE GALLERY;

ONLINE AT [MAG.ROCHESTER.EDU/CREATIVE WORKSHOP](https://mag.rochester.edu/creative-workshop) UNTIL JUNE 2021

### HANDMADE: ADULT STUDENT SHOW

ON VIEW **APRIL 16–MAY 4** IN THE LUCY BURNE GALLERY;

ONLINE AT [MAG.ROCHESTER.EDU/CREATIVE WORKSHOP](https://mag.rochester.edu/creative-workshop) UNTIL SEPTEMBER 2021

To learn more about how to show your art, contact Rachael Baldanza, 585.276.8956 ([rbaldanza@mag.rochester.edu](mailto:rbaldanza@mag.rochester.edu)).

PICTURED ABOVE (FROM LEFT): *Glacial Moment*, woodcut by Karen Kunc, Print Club of Rochester. | *Fallen Flowers*, watercolor by adult student Claire Crilly, and *Rhubarb Leaf*, ceramic by adult student Terri Schumacher. | Sugar skulls by Anna C. and Parson A., child students of Taylor Kennedy.

## BIRTHDAY PARTIES

Are you a MAG member at the family level or above? The Creative Workshop is available to host artful weekend parties for children and families. To learn more call 585.276.8956 or visit [mag.rochester.edu/creativeworkshop](https://mag.rochester.edu/creativeworkshop).

Please note: Due to the ongoing pandemic, individual dates and the number of partygoers will be limited until further notice.

## HOW TO REGISTER

Please mail or bring form to:

### CREATIVE WORKSHOP

500 UNIVERSITY AVENUE, ROCHESTER, NY 14607

Full class fee is required with registration. If you would like a confirmation of class enrollment, include your email address at right. Please allow at least one week from registration for confirmation.

Register early to guarantee enrollment in the class of your choice.

### PHONE NUMBER PLEASE!

Don't forget to supply the best number(s) where we can reach you in case of an emergency. Check the MAG website or FaceBook for weather cancellations.

### ESPECIALLY FOR PARENTS

Please give us names and phone numbers of any adults permitted to pick up your child from a class on the form at right.

Students should be the stated age by the start of the class. Exceptions can be made for some classes; check with the Workshop, 585.276.8959.

Children are expected to attend and participate in classes without a parent or guardian present, unless otherwise noted. Students should dress to get dirty—that's part of the fun!

### REFUND POLICY

- All class registrations are non-refundable with the exception of those that have been cancelled due to inadequate enrollment.
- The Workshop reserves the right to cancel any class, in which case a full refund is issued.
- We cannot prorate class fees for any student not attending all class meetings.
- The Memorial Art Gallery reserves the right to remove or bar any person from Creative Workshop classes who, in MAG's judgment, poses a perceived or actual threat to person or property or whose conduct disrupts or interferes with the class.

*Please note that the Workshop reserves the right to make teacher changes or cancel classes when necessary.*

### ABOUT OUR PRICES

The Workshop has long offered classes at the lowest rates possible. If the price of a class is what keeps you from considering it, please don't hesitate to inquire about a payment plan or need-based scholarship.

Each year, approximately 100 students take Workshop classes at a reduced rate through the support of many generous endowment funds.

For scholarship inquiries, contact Peggy LaHair-Edmunds, 585.276.8957 ([plahaire@mag.rochester.edu](mailto:plahaire@mag.rochester.edu)). All scholarships are need-based and are awarded on a first come, first served basis.

## join & save

Join MAG today (or renew your membership) and save! When you register for any class at the Creative Workshop, you can take \$15 off your Individual or Family membership. You'll pay only \$60 (Individual) or \$80 (Family). Plus you'll get discounted class fees and other perks!

## members' priority registration

We're happy to offer members' priority registration for classes in this brochure from NOVEMBER 30–DECEMBER 6. Register online or in person, or send us a check!

## online registration

Register from your computer or smartphone! To create an account, follow the link below. *Members MUST be logged in to receive exclusive discounts.*

[mag.rochester.edu/creativeworkshop](http://mag.rochester.edu/creativeworkshop)

Need help? Call us at 585.276.8959.

## family discount on classes

We love families! When you register multiple family members in one transaction, you'll get a 10% discount on the entire cart. To learn more, call us at 585.276.8959.

# REGISTER HERE

GENERAL REGISTRATION  
OPENS DECEMBER 7

(members, see above!)

## WINTER 2021 CREATIVE WORKSHOP REGISTRATION FORM

PLEASE DO NOT USE THIS FORM FOR ART CAMPS ON P. 2. VISIT OUR WEBSITE: [MAG.ROCHESTER.EDU/CREATIVELWORKSHOP](http://MAG.ROCHESTER.EDU/CREATIVELWORKSHOP)

STUDENT #1 \_\_\_\_\_ AGE/BIRTHDATE (CHILD ONLY) \_\_\_\_\_

COURSE CODE & TITLE \_\_\_\_\_ DAY/TIME \_\_\_\_\_

STUDENT #2 \_\_\_\_\_ AGE/BIRTHDATE (CHILD ONLY) \_\_\_\_\_

COURSE CODE & TITLE \_\_\_\_\_ DAY/TIME \_\_\_\_\_

ADULT'S NAME (CHILDREN'S CLASSES) \_\_\_\_\_ RELATIONSHIP TO CHILD \_\_\_\_\_

ADDRESS \_\_\_\_\_ ZIP \_\_\_\_\_

HOME PHONE \_\_\_\_\_ WORK PHONE \_\_\_\_\_ CELL PHONE \_\_\_\_\_

BEST PLACE TO REACH YOU (REQUIRED)  HOME  WORK  CELL

EMAIL (TO CONFIRM REGISTRATION) \_\_\_\_\_

ADULTS AUTHORIZED TO PICK UP YOUR CHILD \_\_\_\_\_

ANYTHING ELSE WE SHOULD KNOW? \_\_\_\_\_

GALLERY MEMBER?  YES (INDICATE LEVEL)  
 INDIVIDUAL  FAMILY

WISH TO BE A MEMBER? (SEE FACING PAGE FOR SPECIAL OFFER)  YES  NO  
 INDIVIDUAL (\$75) (\$60)  FAMILY (\$95) (\$80)

I GIVE PERMISSION FOR THE USE OF PHOTOS AND VIDEO OF MYSELF AND / OR MY ARTWORK IN MEMORIAL ART GALLERY PUBLICATIONS.

I GIVE PERMISSION FOR THE USE OF PHOTOS AND VIDEO OF MY CHILD AND / OR MY CHILD'S ARTWORK IN MEMORIAL ART GALLERY PUBLICATIONS.

REGISTRATION CONSTITUTES ACCEPTANCE OF THE REFUND POLICY AT LEFT.

METHOD OF PAYMENT

ENCLOSED IS MY CHECK PAYABLE TO THE MEMORIAL ART GALLERY.

AMOUNT PAID \$ \_\_\_\_\_

I AM PAYING CASH (DO NOT MAIL).

AMOUNT PAID \$ \_\_\_\_\_

HOW DID YOU HEAR ABOUT THE CREATIVE WORKSHOP?

PAST/CURRENT STUDENT  NEWSPAPER AD  OPEN HOUSE  FRIEND  OTHER

OFFICE USE ONLY	
COURSE FEE	_____
COURSE FEE	_____
MEMBERSHIP	_____
TOTAL	_____
DATE PROC.	_____
CASH	_____
CHECK #	_____
ORDER #	_____
INITIALS	_____
LIST	_____
CONFIRM	_____
REFUND	_____
AMOUNT \$	_____
INITIALS	_____
CS	_____
CONFIRM	_____
DATE	_____



500 University Ave., Rochester, NY 14607-1484

585.276.8900

[mag.rochester.edu](http://mag.rochester.edu)



# WINTER 2021

CLASSES START JANUARY 25

*Watch for online information on spring classes in March!*

# FUN & SAFE ART MAKING FOR ALL

## PRIVATE LESSONS



Are you interested in working one-on-one with one of our artist teachers? Or do you have a specific need for creative instruction not matched by our regular classes? We can arrange private lessons.

We are able to offer individual instruction in drawing, painting, jewelry, and mixed media.

Most commonly, we help high school students compile a stronger portfolio for college admission, but we also can arrange private classes in different media for adults and children over 13.

Interested? Contact Rachael Baldanza, 585.276.8956  
([rbaldanza@mag.rochester.edu](mailto:rbaldanza@mag.rochester.edu)).